

Smart Cards for Online Connectivity

Software and Hardware Components for Secure Online Transactions



Building a website is easy. Extending your brand and transactions securely through cyberspace takes planning.

The need for better security in online transactions must meet the ever-increasing demands of regulation, customer service, and security for your business. Smart cards are the cornerstone of the most secure system you can create.

CardLogix recognizes that end-to-end solutions differ based on many variables. We have combined our smart cards with a variety of software and hardware components that you will need to complete your specific solution. Regardless of the individual parameters that your system must account for, the following general steps are fundamental for all card systems.

Enrollment

This first step collects personal data from the player as they join your program. The data uniquely identifies the person with a combination of common identifiers, such as a driver license number or a passport number. Most documents can be captured with a small-footprint scanner for ease of data input. These root or seed documents are what are commonly needed to prove regulatory compliance. If regulation or your security needs are more stringent, you can add more security by incorporating biometrics, such as signature, fingerprint, or facial recognition functions. Some form of PIN might be necessary for establishing a 'card present' transaction that cannot be repudiated.

Software Components

- BioEnrollment Software
- Integrated Data & Card Management System
- Trakplex® API
- BioMatch Software
- AFIS Data Connection
- Facial Capture Software

Hardware Components

- Small-Footprint Document Scanner
- Signature Pad
- Biometric Smart Card Reader
- Digital Camera



Vetting

As with all secure ID systems, the personal data that you gather from your guest may need to be compared to an industry no-play list or a government or law-enforcement database to legitimize the person's identity and suitability to play. You can conditionally enroll a new player, with limited funds and functions, until the verification is completed.

Issuance

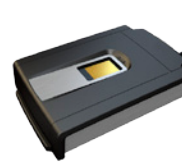
This step creates a card that the player will use in brick & mortar gaming and other secure online functions. The smart player card incorporates identity, stores value, and records transactions. A unique credential is established based upon the cardholder's vetted identity. The card is prepared to remotely communicate through the Internet with your network. If regulations require you to verify the player's location, you must also incorporate a geolocation feature with the help of your telecom provider. At issuance, the card can be printed with the player's photo, signature, and many other elements that brand your organization and make the card attractive and secure.

Software Components

- E-media Software
- Cardcoach Ultra Software
- Printplex® API

Hardware Components

- Smart Cards
- Card Printers
- Printer Supplies
- Encoding Couplers



Smart Cards for Online Connectivity

Software and Hardware Components for Secure Online Transactions

Verify and Authorize

The card is activated when it is inserted into a remote reader or terminal. This step begins an authentication process that verifies the player's identity and confirms the card's legitimacy. Once authorized, value can be loaded onto the card via the player's bank and clearing house. When play is concluded, an electronic signature is produced that sums up the play, remaining value, and either rewards (pays out) or revokes (stops play), and securely closes out the session.

Software Components

- Trakplex® ActiveX
- Card Readers
- Server-Side Authentication Software
- Match On-Card Applet
- Facial Comparison Software
- Biomatch AP

Hardware Components

- Card Printers
- Card Readers
- Biometric Smart Card Readers
- Encoding Couplers
- Specialty Web Cameras

Typical Online Gaming System

