



15370 Barranca Parkway  
Irvine, CA 92618-2215  
USA

# OMNIKEY®

## Smart Card Readers

(USB, ExpressCard and PCMCIA)

**Base Models:** 1021, 3021, 3121, 4040, 4121, 4321, 5021, 5025, 5121, 5125, 5127, 5321, 5325, 5326, 5421, 5427, 6121, 6221, 6321

### USER GUIDE

3121-905-ENEN, Rev A.7

December 2013

© 2008 - 2013 HID Global Corporation/ASSA ABLOY AB. All rights reserved.

This guide describes the HID OMNIKEY Smart Card Reader installation. Reference your driver documentation (readme) for a list of supported windows versions.

Three types of installation exist:

- Unattended (preferred installation)
- Automatic (internet connection required)
- Manual

### Unattended

The Unattended installation is the preferred method. Unattended installation files are found at [www.hidglobal.com/omnikey](http://www.hidglobal.com/omnikey). Optionally, obtain these files from an installation CD (if available).

1. To download the latest HID OMNIKEY Unattended setup drivers, go to: [www.hidglobal.com/omnikey](http://www.hidglobal.com/omnikey), and select **Download OMNIKEY drivers**.
2. Select your OMNIKEY product and operating system.
3. From the list, select the **Unattended Setup Installer** and confirm the license agreement.
4. Double-click the executable file and follow the instructions displayed in the setup window.

**Note:** In addition, download API drivers. The SYNC-API is required for applications with memory or contactless (iCLASS®) cards. The CT-API is often required for PIN Pad readers (electronic signature applications), as well as health care applications.

In standard installations, installing these APIs is suggested.

For driver installation local administration rights may be required.

Do not plug in the OMNIKEY reader into your computer until setup is complete.

5. Execute the Unattended Setup.EXE file and follow the Install Wizard instructions.

**Note:** For uninstalling the OMNIKEY drivers, restart the setup or (from the control panel) use **Add/Remove Programs**.

6. After finishing the installation, plug in your reader to the port (USB, ExpressCard®, or PCMCIA).
7. Windows automatically detects and installs the new hardware connected to the port (USB, ExpressCard, or PCMCIA).

Proceed to the OMNIKEY Workbench section for testing and installation.

### Automatic

Ensure your computer has an online connection to the Internet.

1. Connect the reader to the computer port (USB, ExpressCard, or PCMCIA).
2. Windows detects the new hardware connected to the port (USB, ExpressCard, or PCMCIA) and requests the drivers.
3. After the **Windows Hardware Wizard** opens, Windows requests to connect to Windows Update to search for software, click **Yes, this time only**.
4. The OMNIKEY reader automatically is recognized and the appropriate driver installed through Windows Update.

The OMNIKEY reader is ready for use.

**Note:** If your OMNIKEY reader is CCID compliant, use a native Windows CCID driver to operate the reader. However the native driver does not allow you to utilize the readers advanced features and functions.

Proceed to the **OMNIKEY Workbench** section for testing the installation.

### Manual

For manual driver installation, local administration rights may be required.

Original OMNIKEY drivers must be locally available on your computer (for example, after internet download or from a CD).

1. To download the latest OMNIKEY drivers, go to: <http://www.hidglobal.com/omnikey>, and select **Download OMNIKEY drivers**.
2. Select your OMNIKEY product and operating system.
3. From the list, select the driver for download and confirm the license agreement.

**Note:** In addition, download API drivers. The SYNC-API is often required for applications with memory or contactless cards (HID iCLASS). While the CT-API is often required for PIN Pad reader use (electronic signature applications), as well as health care applications.

In standard installations, installing these APIs is suggested.

4. After downloading the self-extracting file, execute the file to extract the drivers to the local hard drive (default path **c:\HID Global**).

**Note:** Drivers have not yet been installed.

5. Select the driver location, click **Next**.



- Once the drivers are stored on the computer, connect the OMNIKEY reader to the port (USB, ExpressCard, or PCMCIA) and start the installation process. When the Windows Hardware Wizard requests for the driver, select **Install from a list or specific location**.
- Check **Include this location in search** and specify the location where the drivers are stored (for example: **C:\HID Global\5x21\_V1.2.9.2**). Click **Next**. When installation is complete, click **Finished**.

**Note:** If using unsigned BETA drivers, choose the **Don't search, I will choose the driver to install** radio button.

After finishing the installation your OMNIKEY Smart Card Reader is ready for use.

### Installation Check

Ensure your device is recognized and listed in the Windows Device Manager dialog, for example OMNIKEY 5x21, in the **Smart Card Reader** section.

**Note:** If you are using an OMNIKEY reader with a native CCID driver, the reader is listed as a CCID compliant device.

- Open Windows Explorer. Click **Start > Programs > Accessories > Windows Explorer**.
- Open the Device Manager. Right-click **Computer > Properties > click Device Manager**.
- Expand the **Smart card readers** and ensure the OMNIKEY reader is found.

Proceed to the **OMNIKEY Workbench** section for testing the installation.

### Release Notes

When installing with Unattended or Manual options, the Readme, and Driver Release Notes are installed by default at **C:\Program Files\HID Global\HID OMNIKEY Workbench**.

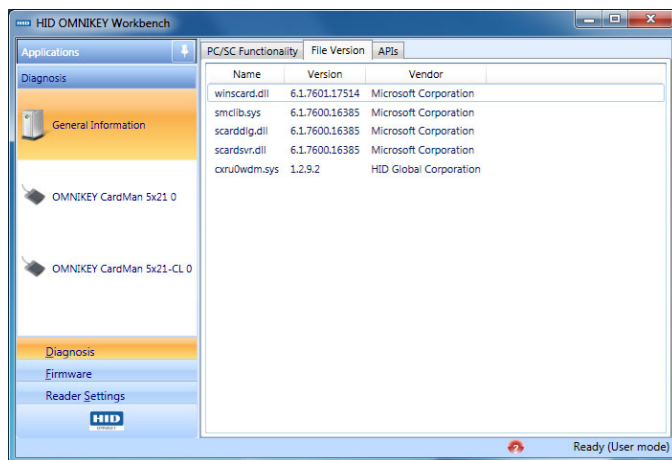
### OMNIKEY Workbench

- Download the latest **OMNIKEY Workbench**, by going to: <http://www.hidglobal.com/omnikey>. Select **Driver Downloads**.
- Select your OMNIKEY product and operating system. Choose to download the OMNIKEY Workbench and confirm the license agreement. When download is complete, click **Run**.

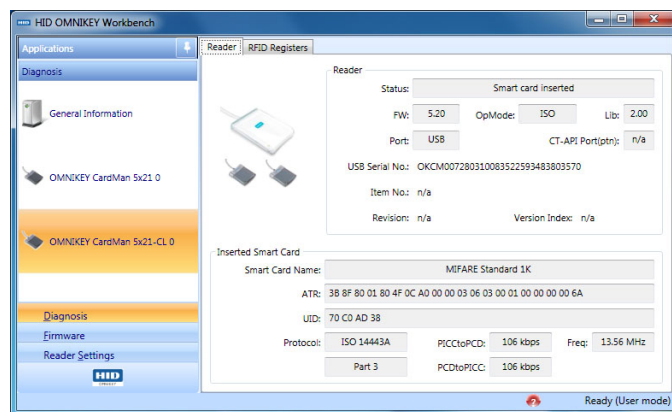
**Note:** The OMNIKEY Workbench only works with OMNIKEY readers. Older drivers use a Diagnostic tool which is available from the control panel.

Start the OMNIKEY Workbench from the program shortcut. Go to **Start > Programs > HID Global > OMNIKEY Workbench**.

OMNIKEY Workbench provides various applications. On startup the **Diagnosis** application shows the **General Settings** view with different tabs for smart card reader service status. Also shown is the driver file and API DLL information.



The **Diagnosis** application also lists all connected OMNIKEY smart card reader details (per the available contact and contactless interface).



For a functional test, insert a working smart card into the reader. As a result, an ATR string and other card details will display.

<p><b>North America</b></p> <p>15370 Barranca Parkway Irvine, CA 92618 USA</p>	<p><b>Asia Pacific</b></p> <p>19/F 625 King's Road North Point, Island East Hong Kong</p>	<p><b>Europe, Middle East &amp; Africa</b></p> <p>Phoenix Road Haverhill, Suffolk CB9 7AE England</p>
--	---	---

www.hidglobal.com  
support.hidglobal.com