

CardMan® 5121 Install Guide

This guide describes the required steps to use a **CardMan 5121 with Windows 98, ME, 2000 or XP.**

1. The latest drivers can be found on the enclosed driver CD.

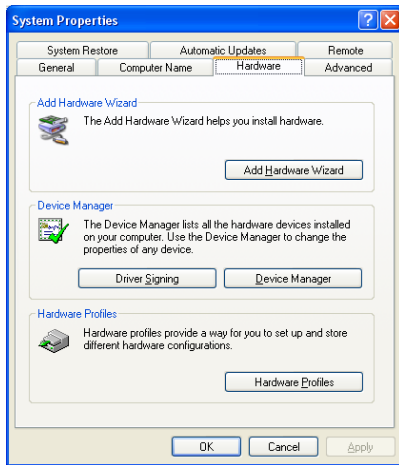
2. Make sure you have a free USB port on either your PC or connected USB hub.



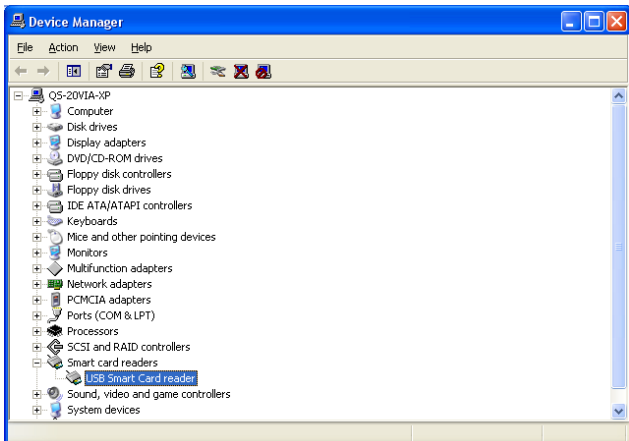
3. Connect the reader to the PC.

4. Windows XP might already have a default Microsoft CCID (Chip Card Interface Device) driver installed and just indicate that the new hardware can be used now, like shown in step 15. The standard CCID driver must be updated manually with a driver that supports the extended features of the CardMan 5121. (Continue with Step 5.)
For systems without the default CCID drivers and Windows 98, ME or 2000, the "Found New Hardware Wizard" will pop up. (Continue with Step 8.)

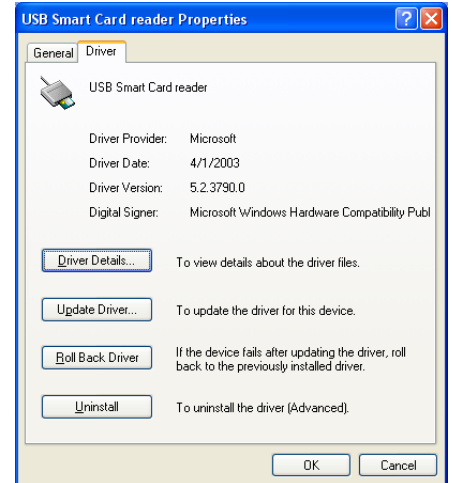
5. Open the Control Panel and double-click the system icon, then select the "Hardware" tab-sheet and click "Device Manager".



6. In the Device Manager, expand "Smart card readers" and double-click "USB Smart Card reader"



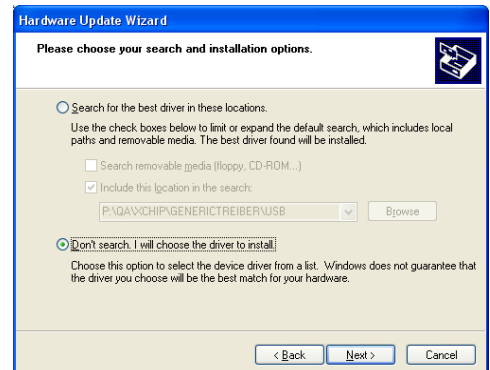
7. Select the "Driver" tab and click "Update Driver".



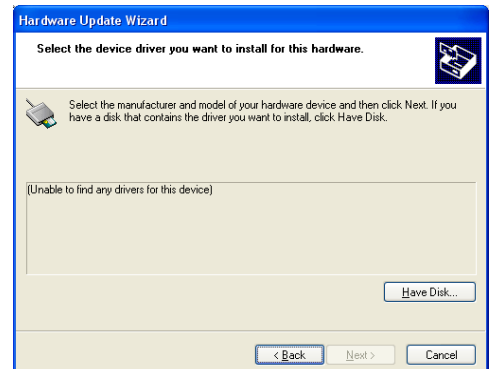
8. Select "Install from list or specific location" and click "Next".



9. Select "Don't search. I will choose the driver to install" and click "Next".



10. Click on "Have Disk".

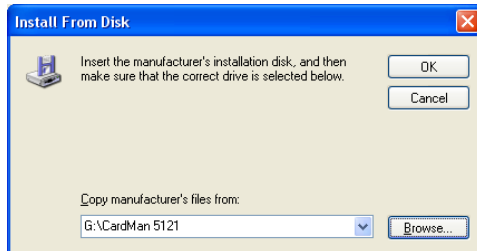


To receive further information, please contact **OMNIKEY**

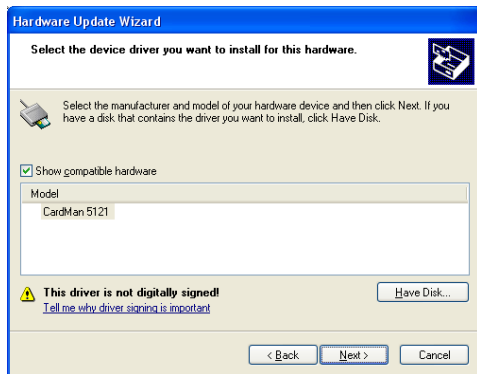
E-Mail: support@omnikey.com or visit our homepage www.omnikey.com

CardMan® 5121 Install Guide

11. Enter the path where you have stored the driver files (e.g. your CD ROM drive).



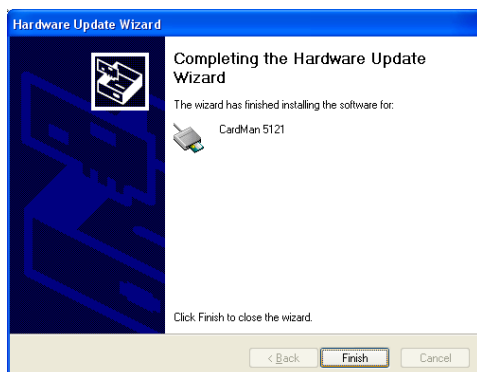
12. Select "CardMan 5121" and click "Next".



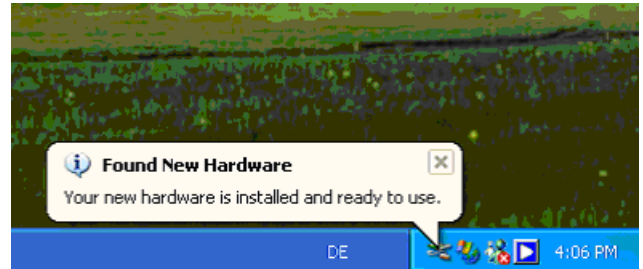
13. The system will tell you that the driver is not digitally signed. Click "Continue Anyway".



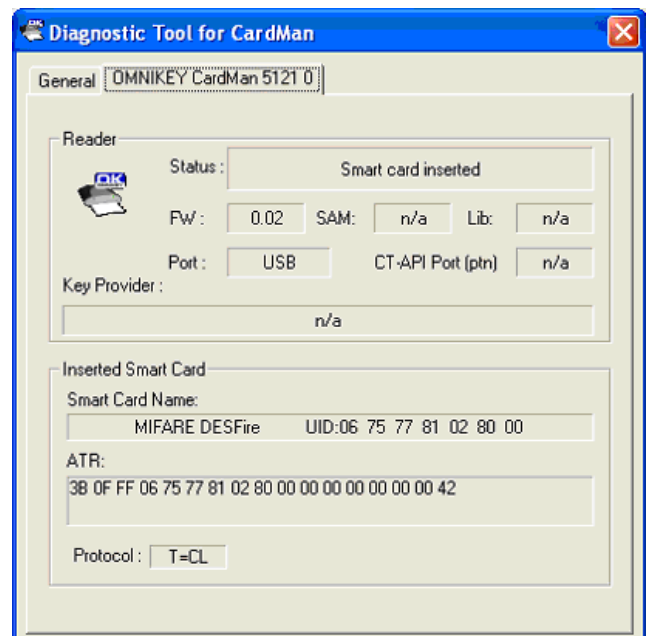
14. The installation is finished now. Click "Finish" to close the wizard.



15. Your CardMan 5121 is now ready to be used.



16. After finishing the installation of the OMNIKEY CardMan 5121 driver, you will find a diagnostic tool icon in your Control Panel. Double-click the icon to start the tool. In addition to the "General" tab sheet, you should see an OMNIKEY CardMan 5121 sheet. Clicking it, you see the status of your reader. Hold a contactless smart card near the OMNIKEY logo on the top side of the housing. You should now see the name of the card and the serial number. The bottom line shows the protocol T=CL (contactless). When inserting a contact smart card in the reader's slot, you see the ATR of the card and the protocol for contact communication (T=0, T=1, synchronous - depending on the card).



To receive further information, please contact
OMNIKEY

E-Mail: support@omnikey.com or visit our homepage www.omnikey.com